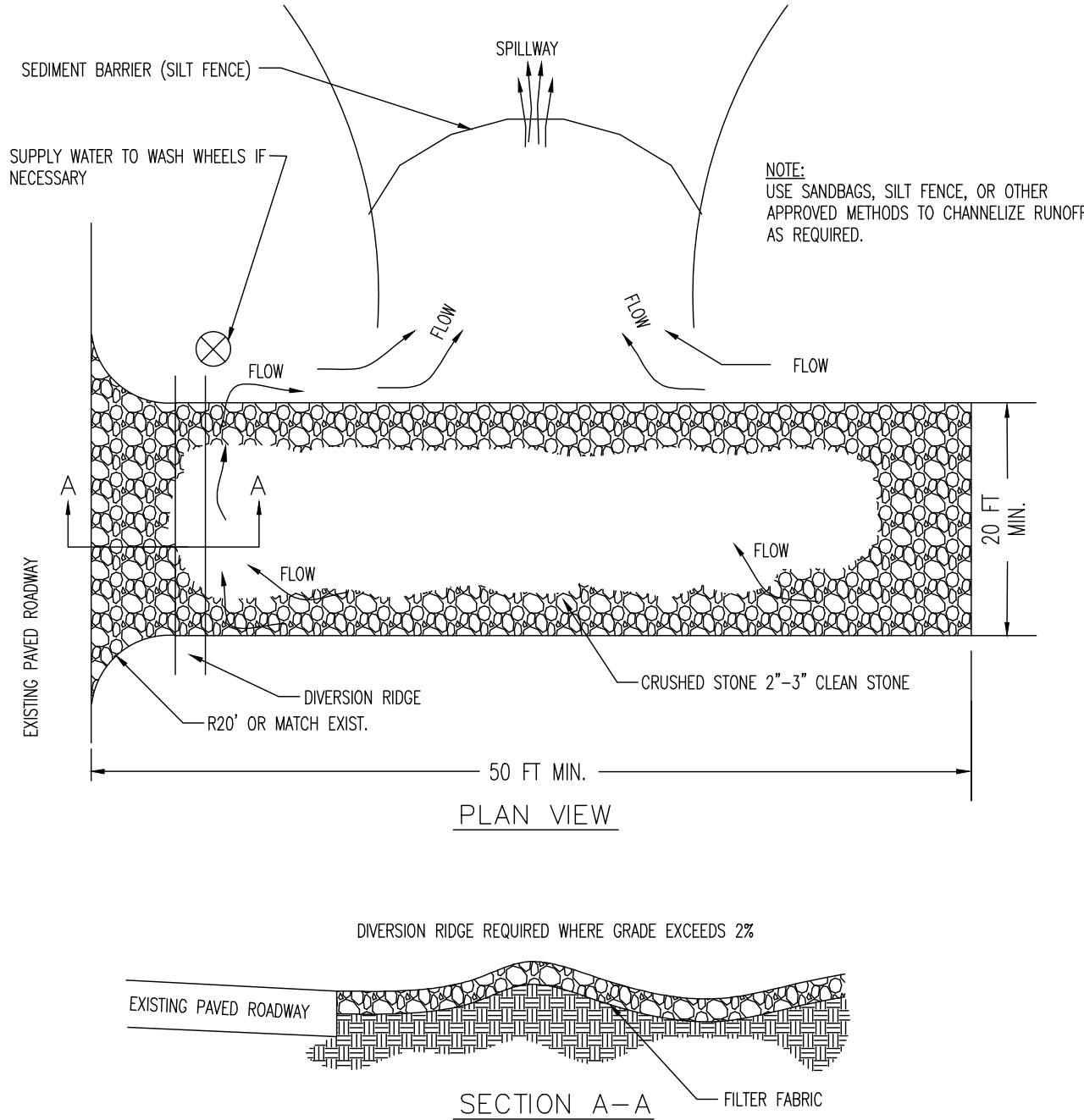


1. EMPTY FILTER SACK WHEN BRIGHTLY COLORED EXPANSION RESTRAINT CAN NO LONGER BE SEEN. GEOTEXTILE WILL BE A WOVEN POLYPROPYLENE FABRIC THAT MEETS OR EXCEEDS REQUIREMENTS IN THE SPECIFICATIONS TABLE.
2. AN OIL ABSORBENT PAD OR PILLOW CAN BE PURCHASED WHEN OIL SPILLS ARE A CONCERN. INSPECT PER REGULATORY REQUIREMENTS.
3. THE WIDTH, "W", OF THE FILTER SACK WILL MATCH THE INSIDE WIDTH OF THE GRATED INLET BOX.
4. THE DEPTH, "D", OF THE FILTER SACK WILL BE BETWEEN 18 INCHES AND 36 INCHES.
5. THE LENGTH, "L", OF THE FILTER SACK WILL MATCH THE INSIDE LENGTH OF THE GRATED INLET BOX.
- 6.
- 7.

LOW TO MODERATE FLOW GEOTEXTILE FABRIC SPECIFICATION TABLE			
PROPERTIES	TEST METHOD	UNITS	
GRAB TENSILE STRENGTH	ASTM D-4632	300 LBS	
GRAB TENSILE ELONGATION	ASTM D-4632	20 %	
PUNCTURE	ASTM D-4833	120 LBS	
MULLEN BURST	ASTM D-3786	800 PSI	
TRAPEZOID TEAR	ASTM D-4533	120 LBS	
UV RESISTANCE	ASTM D-4355	80 %	
APPARENT OPENING SIZE	ASTM D-4751	40 US SIEVE	
FLOW RATE	ASTM D-4491	40 GAL/MIN/SQ FT	
PERMITTIVITY	ASTM D-4491	0.55 SEC -1	

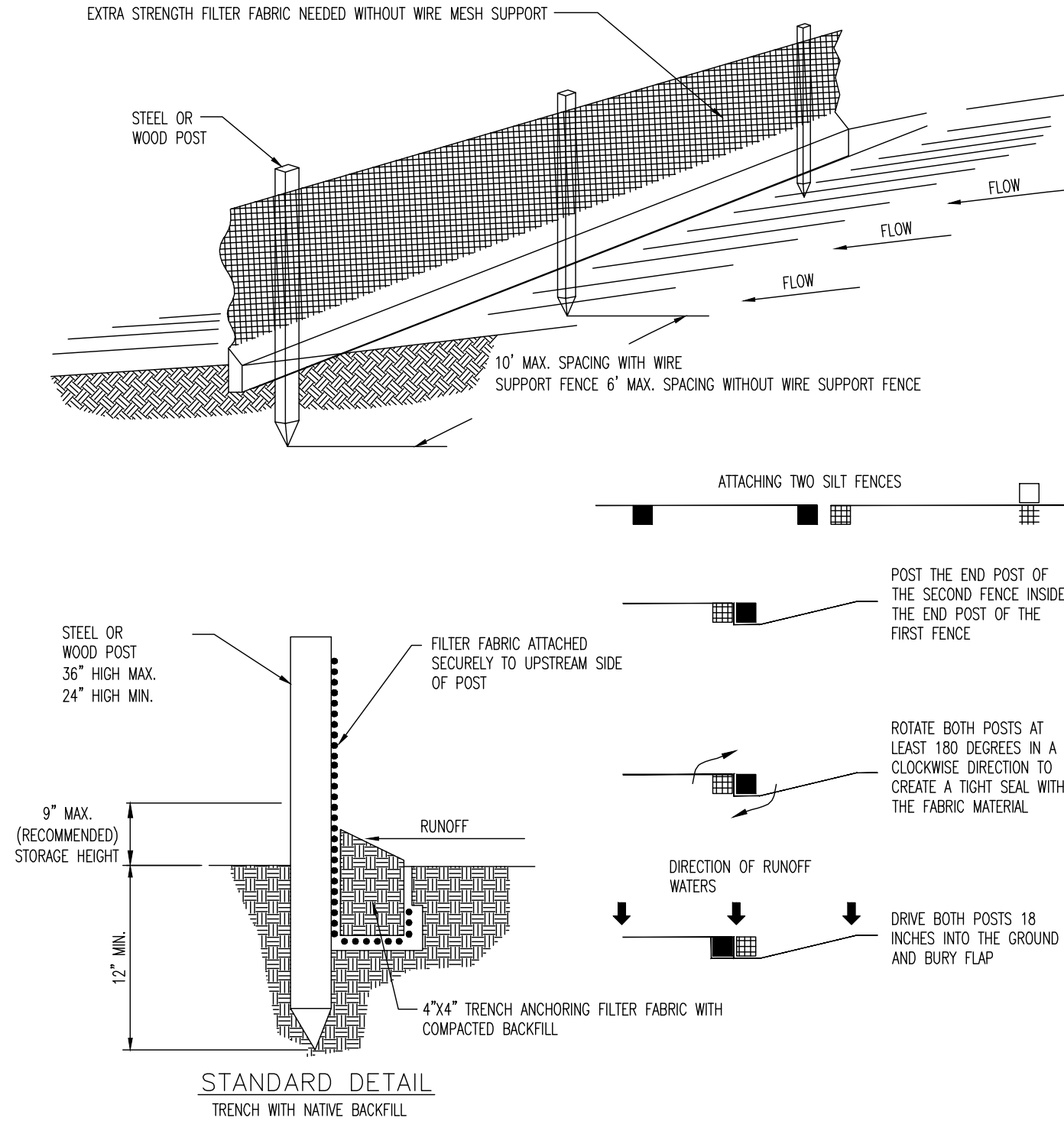
MODERATE TO HIGH FLOW GEOTEXTILE FABRIC SPECIFICATION TABLE			
PROPERTIES	TEST METHOD	UNITS	
GRAB TENSILE STRENGTH	ASTM D-4632	265 LBS	
GRAB TENSILE ELONGATION	ASTM D-4632	20 %	
PUNCTURE	ASTM D-4833	135 LBS	
MULLEN BURST	ASTM D-3786	420 PSI	
TRAPEZOID TEAR	ASTM D-4533	45 LBS	
UV RESISTANCE	ASTM D-4355	90 %	
APPARENT OPENING SIZE	ASTM D-4751	20 US SIEVE	
FLOW RATE	ASTM D-4491	200 GAL/MIN/SQ FT	
PERMITTIVITY	ASTM D-4491	1.5 SEC -1	

FILTER SACK INLET PROTECTION
NOT TO SCALE



- NOTES:
1. THE ENTRANCE SHALL BE MAINTAINED IN A CONDITION THAT WILL PREVENT TRACKING OR FLOWING OF SEDIMENT ONTO PUBLIC RIGHTS-OF-WAY. THIS MAY REQUIRE TOP DRESSING, REPAIR AND/OR CLEANOUT OF ANY MEASURES USED TO TRAP SEDIMENT.
 2. WHEN NECESSARY, WHEELS SHALL BE CLEANED PRIOR TO ENTRANCE ONTO PUBLIC RIGHT-OF-WAY.
 3. WHEN WASHING IS REQUIRED, IT SHALL BE DONE ON AN AREA STABILIZED WITH CRUSHED STONE THAT DRAINS INTO AN APPROVED SEDIMENT TRAP OR SEDIMENT BASIN.

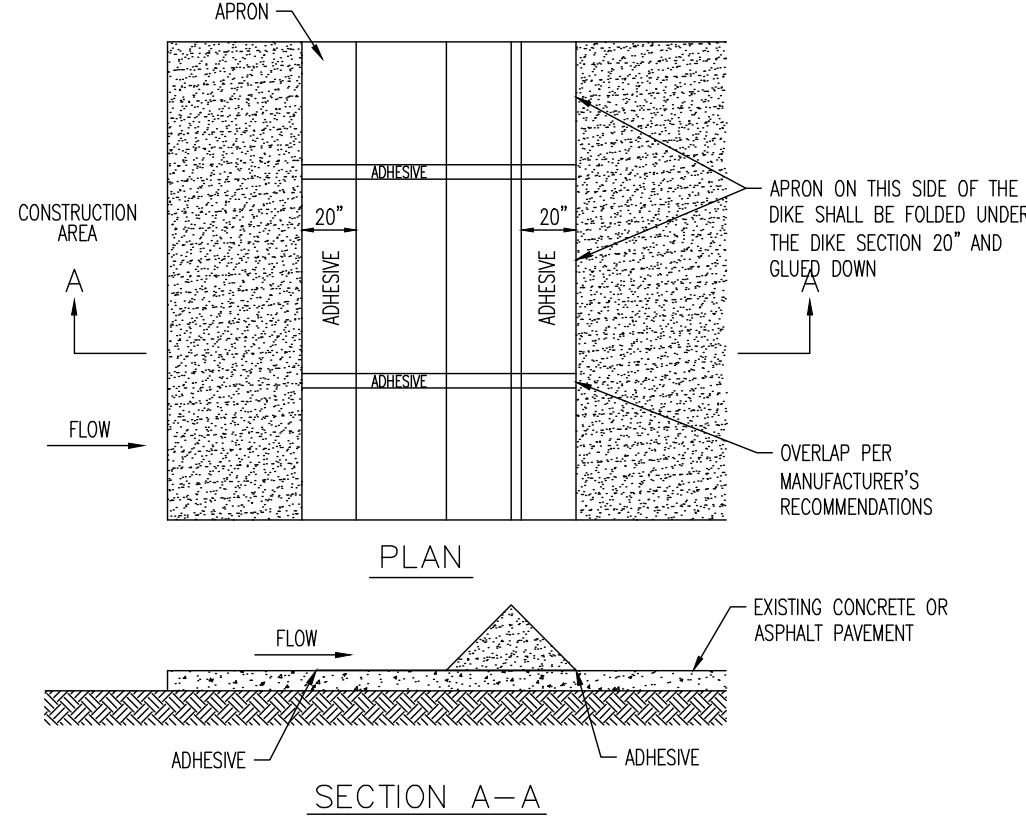
TEMPORARY GRAVEL CONSTRUCTION ENTRANCE
NOT TO SCALE



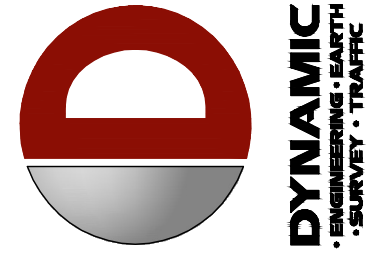
- NOTE:
1. INSPECT AND REPAIR FENCE EVERY 7 DAYS AND AFTER EACH STORM EVENT AND REMOVE SEDIMENT WHEN NECESSARY.
 2. REMOVED SEDIMENT SHALL BE DEPOSITED TO AN AREA THAT WILL NOT CONTRIBUTE SEDIMENT OFF-SITE AND CAN BE PERMANENTLY STABILIZED.
 3. SILT FENCE SHALL BE PLACED ON SLOPE CONTOURS TO MAXIMIZE PONDING EFFICIENCY.
 4. DOUBLE ROW SILT FENCE SHALL BE INSTALLED WITH 3' HORIZONTAL SPACING.

STAKED SILT FENCE
NOT TO SCALE

- NOTES:
1. INSTALLED SILT DIKE UNIT SHALL HAVE CONTINUOUS AND FIRM CONTACT WITH PAVEMENT.
 2. ADHESIVES SHALL BE LIQUID NAILS OR APPROVED EQUAL FOR CONCRETE PAVEMENT APPLICATIONS AND EMULSIFIED ASPHALT FOR ASPHALT APPLICATIONS.
 3. ADHESIVE SHALL BE PLACED WHERE THE UNITS OVERLAP AND A 20\"/>



SILT DIKE ON EXISTING PAVEMENT
NOT TO SCALE



REV.	DATE	COMMENTS
1	7/16/2025	DRC COMMENTS

THIS PLAN SET IS FOR PERMITTING PURPOSES
ONLY AND MAY NOT BE USED FOR CONSTRUCTION

DRAWN BY: SRM
DESIGNED BY: EC
CHECKED BY: AP
DATE: -

PROJECT: **LT 20 PROCESS WAREHOUSE ADDITION**
PARCELA 14 4842-23-00-0371
115 NW 16TH STREET
POMPANO BEACH, BROWARD COUNTY, FL 33060

DYNAMIC ENGINEERING
LAND DEVELOPMENT CONSULTING • PERMITTING
GEOTECHNICAL • ENVIRONMENTAL
TRAFFIC • SURVEY • PLANNING & ZONING

100 NE 5th Avenue
Suite 82
Delray Beach, FL 33483
T: 561.921.8570

Offices conveniently located throughout the United States:
New Jersey | Delaware | Florida | Maryland | Pennsylvania | Texas
Florida Certificate of Authorization No. 32333

www.dynamiccc.com

ÁNGEL PIÑERO

PROFESSIONAL ENGINEER
FLORIDA LICENSE No. 88047
DATE:



PROTECT YOURSELF

ALL STATES REQUIRE NOTIFICATION OF
EXCAVATORS, DESIGNERS, OR ANY PERSON
PREPARING TO DISTURB THE EARTH'S
SURFACE IN ADVANCE IN ANY STATE.

FOR STATE SPECIFIC DIRECT PHONE NUMBERS VISIT:
WWW.CALL811.COM

TITLE: **EROSION CONTROL DETAILS**

SCALE: (H) NOT TO SCALE
(M) SCALE
DATE: 04/15/2025
PROJECT No: 5758-25-01613

SHEET No: **C2.02**
Rev. #: 1